

REGADENOSON- regadenoson injection, solution

Hospira, Inc.

HIGHLIGHTS OF PRESCRIBING INFORMATION

These highlights do not include all the information needed to use REGADENOSON INJECTION safely and effectively. See full prescribing information for REGADENOSON INJECTION.

REGADENOSON injection, for intravenous use

Initial U.S. Approval: 2008

INDICATIONS AND USAGE

Regadenoson injection is a pharmacologic stress agent indicated for radionuclide myocardial perfusion imaging (MPI) in patients unable to undergo adequate exercise stress (1).

DOSAGE AND ADMINISTRATION

The recommended dose of regadenoson injection is 5 mL (0.4 mg regadenoson) administered as an intravenous injection within 10 seconds; followed immediately by saline flush and radiopharmaceutical (2).

DOSAGE FORMS AND STRENGTHS

- Injection: Single-dose pre-filled syringe: 0.4 mg/5 mL (0.08 mg/mL) (3).

CONTRAINDICATIONS

Do not administer regadenoson injection to patients with:

- Second- or third-degree AV block, or
- sinus node dysfunction

unless the patients have a functioning artificial pacemaker (4).

WARNINGS AND PRECAUTIONS

- Myocardial Ischemia. Fatal cardiac events have occurred. Avoid use in patients with symptoms or signs of acute myocardial ischemia, for example unstable angina or cardiovascular instability, who may be at greater risk. Cardiac resuscitation equipment and trained staff should be available before administration (5.1).
- Sinoatrial (SA) and Atrioventricular (AV) Nodal Block. Adenosine receptor agonists, including regadenoson injection, can depress the SA and AV nodes and may cause first-, second- or third-degree AV block, or sinus bradycardia (5.2).
- Atrial Fibrillation/Atrial Flutter. New-onset or recurrent atrial fibrillation with rapid ventricular response and atrial flutter have been reported (5.3).
- Hypersensitivity, including anaphylaxis, angioedema, cardiac or respiratory arrest, respiratory distress, decreased oxygen saturation, hypotension, throat tightness, urticaria, and rashes have occurred. Have personnel and resuscitative equipment immediately available (5.4).
- Hypotension. Adenosine receptor agonists, including regadenoson injection, induce vasodilation and hypotension. The risk of serious hypotension may be higher in patients with autonomic dysfunction, stenotic valvular heart disease, pericarditis or pericardial effusions, stenotic carotid artery disease with cerebrovascular insufficiency, or hypovolemia (5.5).
- Hypertension. Adenosine receptor agonists, including regadenoson injection, may induce clinically significant increases in blood pressure particularly in patients with a history of hypertension and when the MPI includes low level exercise (5.6).
- Bronchoconstriction. Adenosine receptor agonists, including regadenoson injection, may induce dyspnea, bronchoconstriction and respiratory compromise in patients with chronic obstructive pulmonary disease (COPD) or asthma. Resuscitative measures should be available (5.7).
- Seizure. Regadenoson injection may lower the seizure threshold. New onset or recurrence of convulsive seizures has occurred. Some seizures are prolonged and require urgent anticonvulsive management. Methylxanthine use is not recommended in patients who experience a seizure in association with regadenoson injection (5.8).
- Cerebrovascular Accident (Stroke). Hemorrhagic and ischemic cerebrovascular accidents have occurred (5.9).

ADVERSE REACTIONS

The most common (incidence \geq 5%) adverse reactions to regadenoson injection are dyspnea, headache,

flushing, chest discomfort, dizziness, angina pectoris, chest pain, and nausea (6).

To report SUSPECTED ADVERSE REACTIONS, contact Hospira, Inc. at 1-800-441-4100 or FDA at 1-800-FDA-1088 or www.fda.gov/medwatch.

-----**DRUG INTERACTIONS**-----

- Methylxanthines, e.g., caffeine, aminophylline and theophylline, interfere with the activity of regadenoson injection (7.1, 12.2).
- Aminophylline may be used to attenuate severe and/or persistent adverse reactions to regadenoson injection (7.1, 10).
- Dipyridamole may increase the activity of regadenoson injection. When possible, withhold dipyridamole for at least two days prior to regadenoson injection administration (7.1).

See 17 for PATIENT COUNSELING INFORMATION.

Revised: 1/2022

FULL PRESCRIBING INFORMATION: CONTENTS*

1 INDICATIONS AND USAGE

2 DOSAGE AND ADMINISTRATION

3 DOSAGE FORMS AND STRENGTHS

4 CONTRAINDICATIONS

5 WARNINGS AND PRECAUTIONS

- 5.1 Myocardial Ischemia
- 5.2 Sinoatrial and Atrioventricular Nodal Block
- 5.3 Atrial Fibrillation/Atrial Flutter
- 5.4 Hypersensitivity, Including Anaphylaxis
- 5.5 Hypotension
- 5.6 Hypertension
- 5.7 Bronchoconstriction
- 5.8 Seizure
- 5.9 Cerebrovascular Accident (Stroke)

6 ADVERSE REACTIONS

- 6.1 Clinical Trials Experience
- 6.2 Post-Marketing Experience

7 DRUG INTERACTIONS

- 7.1 Effects of Other Drugs on Regadenoson Injection
- 7.2 Effect of Regadenoson Injection on Other Drugs

8 USE IN SPECIFIC POPULATIONS

- 8.1 Pregnancy
- 8.2 Lactation
- 8.4 Pediatric Use
- 8.5 Geriatric Use
- 8.6 Renal Impairment

10 OVERDOSAGE

11 DESCRIPTION

12 CLINICAL PHARMACOLOGY

- 12.1 Mechanism of Action
- 12.2 Pharmacodynamics
- 12.3 Pharmacokinetics

13 NONCLINICAL TOXICOLOGY

13.1 Carcinogenesis, Mutagenesis, Impairment of Fertility

13.2 Animal Toxicology and/or Pharmacology

14 CLINICAL STUDIES

16 HOW SUPPLIED/STORAGE AND HANDLING

17 PATIENT COUNSELING INFORMATION

* Sections or subsections omitted from the full prescribing information are not listed.

FULL PRESCRIBING INFORMATION

1 INDICATIONS AND USAGE

Regadenoson injection is a pharmacologic stress agent indicated for radionuclide myocardial perfusion imaging (MPI) in patients unable to undergo adequate exercise stress.

2 DOSAGE AND ADMINISTRATION

The recommended dose of regadenoson injection is 5 mL (0.4 mg regadenoson) administered as an intravenous injection within 10 seconds.

- Patients should be instructed to avoid consumption of any products containing methylxanthines, including caffeinated coffee, tea or other caffeinated beverages, caffeine-containing drug products, aminophylline and theophylline for at least 12 hours before a scheduled radionuclide MPI [see *Drug Interactions (7.1) and Clinical Pharmacology (12.2)*].
- Parenteral drug products should be inspected visually for particulate matter and discoloration prior to administration, whenever solution and container permit. Do not administer regadenoson injection if it contains particulate matter or is discolored.
- Administer regadenoson injection as an intravenous injection within 10 seconds into a peripheral vein using a 22 gauge or larger catheter or needle.
- Administer a 5 mL saline flush immediately after the injection of regadenoson injection.
- Administer the radionuclide myocardial perfusion imaging agent 10–20 seconds after the saline flush. The radionuclide may be injected directly into the same catheter as regadenoson injection.

3 DOSAGE FORMS AND STRENGTHS

- Single-dose pre-filled syringe: clear, colorless solution containing regadenoson 0.4 mg/5 mL (0.08 mg/mL).

4 CONTRAINDICATIONS

Do not administer regadenoson injection to patients with:

- Second- or third-degree AV block, or
- sinus node dysfunction

unless these patients have a functioning artificial pacemaker [see *Warnings and Precautions (5.2)*].

5 WARNINGS AND PRECAUTIONS

5.1 Myocardial Ischemia

Fatal and nonfatal myocardial infarction (MI), ventricular arrhythmias, and cardiac arrest have occurred following regadenoson injection. Avoid use in patients with symptoms or signs of acute myocardial ischemia, for example unstable angina or cardiovascular instability; these patients may be at greater risk of serious cardiovascular reactions to regadenoson injection. Cardiac resuscitation equipment and trained staff should be available before administering regadenoson injection. Adhere to the recommended duration of injection [see *Dosage and Administration (2)*]. As noted in an animal study, longer injection times may increase the duration and magnitude of increase in coronary blood flow [see *Clinical Pharmacology (12.2)*]. If serious reactions to regadenoson injection occur, consider the use of aminophylline, an adenosine antagonist, to shorten the duration of increased coronary blood flow induced by regadenoson injection [see *Overdosage (10)*].

5.2 Sinoatrial and Atrioventricular Nodal Block

Adenosine receptor agonists, including regadenoson injection, can depress the SA and AV nodes and may cause first-, second- or third-degree AV block, or sinus bradycardia requiring intervention. In clinical trials first-degree AV block (PR prolongation > 220 msec) developed in 3% of patients within 2 hours of regadenoson injection administration; transient second-degree AV block with one dropped beat was observed in one patient receiving regadenoson injection. In post-marketing experience, third-degree heart block and asystole within minutes of regadenoson injection administration have occurred [see *Adverse Reactions (6.2)*].

5.3 Atrial Fibrillation/Atrial Flutter

New-onset or recurrent atrial fibrillation with rapid ventricular response and atrial flutter have been reported following regadenoson injection [see *Adverse Reactions (6.2)*].

5.4 Hypersensitivity, Including Anaphylaxis

Anaphylaxis, angioedema, cardiac or respiratory arrest, respiratory distress, decreased oxygen saturation, hypotension, throat tightness, urticaria and rashes have occurred. In clinical trials, hypersensitivity reactions were reported in fewer than 1 percent of patients [see *Adverse Reactions (6.1)*]. Have personnel and resuscitative equipment immediately available.

5.5 Hypotension

Adenosine receptor agonists, including regadenoson injection, induce arterial vasodilation and hypotension. In clinical trials, decreased systolic blood pressure (> 35

mm Hg) was observed in 7% of patients and decreased diastolic blood pressure (> 25 mm Hg) was observed in 4% of patients within 45 minutes of regadenoson injection administration. The risk of serious hypotension may be higher in patients with autonomic dysfunction, hypovolemia, left main coronary artery stenosis, stenotic valvular heart disease, pericarditis or pericardial effusions, or stenotic carotid artery disease with cerebrovascular insufficiency. In post-marketing experience, syncope, transient ischemic attacks and seizures have been observed [see *Adverse Reactions (6.2)*].

5.6 Hypertension

Administration of adenosine receptor agonists, including regadenoson injection, may result in clinically significant increases in blood pressure in some patients. Among patients who experienced an increase in blood pressure in clinical trials, the increase was observed within minutes of regadenoson injection administration. Most increases resolved within 10 to 15 minutes, but in some cases, increases were observed at 45 minutes following administration [see *Clinical Pharmacology (12.2)*]. In post-marketing experience, cases of potentially clinically significant hypertension have been reported, particularly with underlying hypertension and when low-level exercise was included in the MPI [see *Adverse Reactions (6.2)*].

5.7 Bronchoconstriction

Adenosine receptor agonists, including regadenoson injection, may cause dyspnea, bronchoconstriction, and respiratory compromise. Appropriate bronchodilator therapy and resuscitative measures should be available prior to and following regadenoson injection administration [see *Adverse Reactions (6.1)*, *Clinical Pharmacology (12.2)*, *Overdosage (10)* and *Patient Counseling Information (17)*].

5.8 Seizure

Regadenoson injection may lower the seizure threshold; obtain a seizure history. New-onset or recurrence of convulsive seizures has occurred following regadenoson injection. Some seizures are prolonged and require emergent anticonvulsive management. Aminophylline may increase the risk of seizures associated with regadenoson injection. Methylxanthine use is not recommended in patients who experience a seizure in association with regadenoson injection administration.

5.9 Cerebrovascular Accident (Stroke)

Hemorrhagic and ischemic cerebrovascular accidents have occurred. Hemodynamic effects of regadenoson injection including hypotension or hypertension may be associated with these adverse reactions [see *Warnings and Precautions (5.5)* and *(5.6)*].

6 ADVERSE REACTIONS

The following adverse reactions are discussed in more detail in other sections of the labeling.

- Myocardial Ischemia [see *Warnings and Precautions (5.1)*]
- Sinoatrial and Atrioventricular Nodal Block [see *Warnings and Precautions (5.2)*]
- Atrial Fibrillation/Atrial Flutter [see *Warnings and Precautions (5.3)*]
- Hypersensitivity, Including Anaphylaxis [see *Warnings and Precautions (5.4)*]

- Hypotension [see Warnings and Precautions (5.5)]
- Hypertension [see Warnings and Precautions (5.6)]
- Bronchoconstriction [see Warnings and Precautions (5.7)]
- Seizure [see Warnings and Precautions (5.8)]
- Cerebrovascular Accident (Stroke) [see Warnings and Precautions (5.9)]

6.1 Clinical Trials Experience

Because clinical trials are conducted under widely varying conditions, adverse reaction rates observed in the clinical trials of a drug cannot be directly compared to rates in the clinical trials of another drug and may not reflect the rates observed in practice.

During clinical development, 1,651 patients were exposed to regadenoson injection, with most receiving 0.4 mg as a rapid (≤ 10 seconds) intravenous injection. Most of these patients received regadenoson injection in two clinical studies that enrolled patients who had no history of bronchospastic lung disease as well as no history of a cardiac conduction block of greater than first-degree AV block, except for patients with functioning artificial pacemakers. In these studies (Studies 1 and 2), 2,015 patients underwent myocardial perfusion imaging after administration of regadenoson injection (N = 1,337) or adenosine injection (N = 678). The population was 26–93 years of age (median 66 years), 70% male and primarily Caucasian (76% Caucasian, 7% African American, 9% Hispanic, 5% Asian). Table 1 shows the most frequently reported adverse reactions.

Overall, any adverse reaction occurred at similar rates between the study groups (80% for the regadenoson injection group and 83% for the adenosine injection group). Aminophylline was used to treat the reactions in 3% of patients in the regadenoson injection group and 2% of patients in the adenosine injection group. Most adverse reactions began soon after dosing, and generally resolved within approximately 15 minutes, except for headache which resolved in most patients within 30 minutes.

Table 1 Adverse Reactions in Studies 1 and 2 Pooled (Frequency \geq 5%)

	Regadenoson Injection N = 1,337	Adenosine Injection N = 678
Dyspnea	28%	26%
Headache	26%	17%
Flushing	16%	25%
Chest Discomfort	13%	18%
Angina Pectoris or ST Segment Depression	12%	18%
Dizziness	8%	7%
Chest Pain	7%	10%
Nausea	6%	6%
Abdominal Discomfort	5%	2%
Dysgeusia	5%	7%
Feeling Hot	5%	8%

ECG Abnormalities

The frequency of rhythm or conduction abnormalities following regadenoson injection or adenosine injection is shown in Table 2 [see *Warnings and Precautions (5.2)*].

Table 2 Rhythm or Conduction Abnormalities* in Studies 1 and 2

	Regadenoson Injection N/N evaluable (%)	Adenosine Injection N/N evaluable (%)
Rhythm or conduction abnormalities [†]	332/1,275 (26%)	192/645 (30%)
Rhythm abnormalities	260/1,275 (20%)	131/645 (20%)
PACs	86/1,274 (7%)	57/645 (9%)
PVCs	179/1,274 (14%)	79/645 (12%)
First-degree AV block (PR prolongation > 220 msec)	34/1,209 (3%)	43/618 (7%)
Second-degree AV block	1/1,209 (0.1%)	9/618 (1%)
AV conduction abnormalities (other than AV blocks)	1/1,209 (0.1%)	0/618 (0%)
Ventricular conduction abnormalities	64/1,152 (6%)	31/581 (5%)

* 12-lead ECGs were recorded before and for up to 2 hours after dosing.

[†] includes rhythm abnormalities (PACs, PVCs, atrial fibrillation/flutter, wandering atrial pacemaker, supraventricular or ventricular arrhythmia) or conduction abnormalities, including AV block.

Respiratory Abnormalities

In a randomized, placebo-controlled trial of 999 patients with asthma (n = 532) or stable chronic obstructive pulmonary disease (n = 467), the overall incidence of pre-specified respiratory adverse reactions was greater in the regadenoson injection group compared to the placebo group (p < 0.001). Most respiratory adverse reactions resolved without therapy; a few patients received aminophylline or a short-acting bronchodilator. No differences were observed between treatment arms in the reduction of >15% from baseline at two-hours in FEV₁ (Table 3).

Table 3 Respiratory Adverse Effects*

	Asthma Cohort		Chronic Obstructive Pulmonary Disease (COPD) Cohort	
	Regadenoson Injection (N = 356)	Placebo (N = 176)	Regadenoson Injection (N = 316)	Placebo (N = 151)
Overall Pre-specified Respiratory Adverse Reaction [†]	12.9%	2.3%	19.0%	4.0%
Dyspnea	10.7%	1.1%	18.0%	2.6%
Wheezing	3.1%	1.1%	0.9%	0.7%

FEV ₁ reduction > 15%‡	1.1%	2.9%	4.2%	5.4%
-----------------------------------	------	------	------	------

* All patients continued the use of their respiratory medications as prescribed prior to administration of regadenoson injection.

† Patients may have reported more than one type of adverse reaction. Adverse reactions were collected up to 24 hours following drug administration. Pre-specified respiratory adverse reactions included dyspnea, wheezing, obstructive airway disorder, dyspnea exertional, and tachypnea.

‡ Change from baseline at 2 hours.

Renal Impairment

In a randomized, placebo-controlled trial of 504 patients (regadenoson injection n = 334 and placebo n = 170) with a diagnosis or risk factors for coronary artery disease and NKF/DOQI Stage III or IV renal impairment (defined as GFR 15–59 mL/min/1.73 m²), no serious adverse events were reported through the 24-hour follow-up period.

Inadequate Exercise Stress

In an open-label, multi-center trial evaluating regadenoson injection administration following inadequate exercise stress, 1,147 patients were randomized into one of two groups. Each group underwent two regadenoson injection stress myocardial perfusion imaging (MPI) procedures. Group 1 received regadenoson injection 3 minutes following inadequate exercise in the first regadenoson injection stress (MPI 1). Group 2 rested 1 hour after inadequate exercise to allow hemodynamics to return to baseline prior to receiving regadenoson injection (MPI 1). Both groups returned for a second stress MPI 1–14 days later and received regadenoson injection without exercise (MPI 2).

The most common adverse reactions are similar in type and incidence to those in Table 1 above for both Groups. The timing of the administration of regadenoson injection following inadequate exercise did not alter the common adverse reaction profile.

Table 4 shows a comparison of cardiac events of interest for the two groups [see *Warnings and Precautions (5.1)*]. The cardiac events were numerically higher in Group 1.

Table 4 Cardiac Events of Interest in Inadequate Exercise Stress Study

Cardiac Event*	Group 1 / MPI 1 Regadenoson Injection 3 minutes following exercise (N = 575)	Group 2 / MPI 1 Regadenoson Injection 1 hour following exercise (N = 567)
	17 (3.0%)	3 (0.5%)
Holter/12-Lead ECG Abnormality		
ST-T Depression (≥ 2 mm)	13 (2.3%)	2 (0.4%)
ST-T Elevation (≥ 1 mm)	3 (0.5%)	1 (0.2%)
Acute coronary syndrome	1 (0.2%)	0
Myocardial infarction	1 (0.2%)	0

* A clinically significant cardiac event was defined as any of the following events found on the Holter ECG/12-lead ECG within one hour after regadenoson administration: ventricular arrhythmias (sustained ventricular tachycardia, ventricular fibrillation, Torsade de Pointes, ventricular flutter); ST-T depression (≥ 2 mm); ST-T elevation (≥ 1 mm); AV block (2:1 AV block, AV Mobitz I, AV Mobitz II, complete heart block); sinus arrest > 3 seconds in duration
Or a Treatment Emergent Adverse Event (TEAE) per the MedDRA SMQ (narrow Scope) for

myocardial infarction Or a TEAE preferred term (PT) of angina unstable within 24 hours of regadenoson administration.

6.2 Post-Marketing Experience

The following adverse reactions have been reported from worldwide marketing experience with regadenoson. Because these reactions are reported voluntarily from a population of uncertain size, it is not always possible to reliably estimate their frequency or establish a causal relationship to drug exposure.

Cardiovascular

Myocardial infarction, cardiac arrest, ventricular arrhythmias, supraventricular tachyarrhythmias including atrial fibrillation with rapid ventricular response (new-onset or recurrent), atrial flutter, heart block (including third-degree block), asystole, marked hypertension, symptomatic hypotension in association with transient ischemic attack, acute coronary syndrome (ACS), seizures and syncope [see *Warnings and Precautions (5.1), (5.2), (5.3), (5.5), (5.6) and (5.8)*] have been reported. Some events required intervention with fluids and/or aminophylline [see *Overdosage (10)*]. QTc prolongation shortly after regadenoson injection administration has been reported.

Central Nervous System

Tremor, seizure, transient ischemic attack, and cerebrovascular accident including intracranial hemorrhage [see *Warnings and Precautions (5.8) and (5.9)*].

Gastrointestinal

Abdominal pain, occasionally severe, has been reported a few minutes after regadenoson injection administration, in association with nausea, vomiting, or myalgias; administration of aminophylline, an adenosine antagonist, appeared to lessen the pain. Diarrhea and fecal incontinence have also been reported following regadenoson injection administration.

Hypersensitivity

Anaphylaxis, angioedema, cardiac or respiratory arrest, respiratory distress, decreased oxygen saturation, hypotension, throat tightness, urticaria, rashes have occurred and have required treatment including resuscitation [see *Warnings and Precautions (5.4)*].

Musculoskeletal

Musculoskeletal pain has occurred, typically 10–20 minutes after regadenoson injection administration; the pain was occasionally severe, localized in the arms and lower back and extended to the buttocks and lower legs bilaterally. Administration of aminophylline appeared to lessen the pain.

Respiratory

Respiratory arrest, dyspnea and wheezing have been reported following regadenoson injection administration.

7 DRUG INTERACTIONS

No formal pharmacokinetic drug interaction studies have been conducted with regadenoson injection.

7.1 Effects of Other Drugs on Regadenoson Injection

- Methylxanthines (e.g., caffeine, aminophylline and theophylline) are non-specific adenosine receptor antagonists that interfere with the vasodilation activity of regadenoson injection [see *Clinical Pharmacology (12.2)* and *Patient Counseling Information (17)*]. Patients should avoid consumption of any products containing methylxanthines as well as any drugs containing theophylline or aminophylline for at least 12 hours before regadenoson injection administration. Aminophylline may be used to attenuate severe or persistent adverse reactions to regadenoson injection [see *Overdosage (10)*].
- In clinical studies, regadenoson injection was administered to patients taking other cardioactive drugs (i.e., β -blockers, calcium channel blockers, ACE inhibitors, nitrates, cardiac glycosides, and angiotensin receptor blockers) without reported adverse reactions or apparent effects on efficacy.
- Dipyridamole may change the effects of regadenoson injection. When possible, withhold dipyridamole for at least two days prior to regadenoson injection administration.

7.2 Effect of Regadenoson Injection on Other Drugs

Regadenoson does not inhibit the metabolism of substrates for CYP1A2, CYP2C8, CYP2C9, CYP2C19, CYP2D6, or CYP3A4 in human liver microsomes, indicating that it is unlikely to alter the pharmacokinetics of drugs metabolized by these cytochrome P450 enzymes.

8 USE IN SPECIFIC POPULATIONS

8.1 Pregnancy

Risk Summary

There are no available data on regadenoson injection use in pregnant women to inform a drug-associated risk. In animal reproduction studies, adverse developmental outcomes were observed with the administration of regadenoson to pregnant rats and rabbits during organogenesis only at doses that produced maternal toxicity (see *Data*).

In the U.S. general population, the estimated background risk of major birth defects and miscarriage in clinically recognized pregnancies is 2–4% and 15–20%, respectively.

Data

Animal Data

Reproductive studies in rats showed that regadenoson doses 10 and 20 times the maximum recommended human dose (MRHD) based on body surface area caused reduced fetal body weights and significant ossification delays in fore- and hind limb phalanges and metatarsals; maternal toxicity also occurred at these doses. Skeletal variations were increased in all treated groups. In rabbits, maternal toxicity occurred at regadenoson doses administered during organogenesis at 4 times the MRHD; however, there were no teratogenic effects in offspring at this dose. At higher doses, 12 and 20 times the MRHD, maternal toxicity occurred along with increased embryo-fetal loss and fetal malformations.

8.2 Lactation

Risk Summary

There is no information on the presence of regadenoson in human milk, the effects on the breastfed infant, or the effects on milk production. Because of the potential risk of serious cardiac reactions in the breastfed infant, advise the nursing mother to pump and discard breast milk for 10 hours after administration of regadenoson injection.

8.4 Pediatric Use

Safety and effectiveness in pediatric patients have not been established.

8.5 Geriatric Use

Of the 1,337 patients receiving regadenoson injection in Studies 1 and 2, 56% were 65 years of age and over and 24% were 75 years of age and over. Older patients (≥ 75 years of age) had a similar adverse event profile compared to younger patients (< 65 years of age), but had a higher incidence of hypotension (2% vs. $\leq 1\%$).

8.6 Renal Impairment

No dose adjustment is needed in patients with renal impairment including patients with end stage renal disease and/or dependent on dialysis [see *Pharmacokinetics (12.3)*].

10 OVERDOSAGE

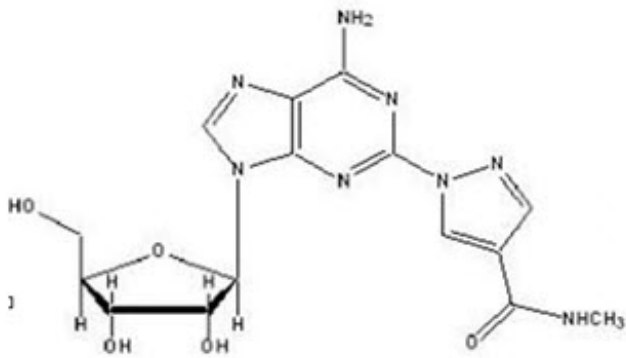
Regadenoson injection overdose may result in serious reactions [see *Warnings and Precautions (5)*]. In a study of healthy volunteers, symptoms of flushing, dizziness and increased heart rate were assessed as intolerable at regadenoson injection doses greater than 0.02 mg/kg.

Aminophylline to Reverse Effects

Methylxanthines, such as caffeine, aminophylline, and theophylline, are competitive adenosine receptor antagonists and aminophylline has been used to terminate persistent pharmacodynamic effects. Aminophylline may be administered in doses ranging from 50 mg to 250 mg by slow intravenous injection (50 mg to 100 mg over 30–60 seconds). Methylxanthine use is not recommended in patients who experience a seizure in association with regadenoson injection administration [see *Warnings and Precautions (5.8)*].

11 DESCRIPTION

Regadenoson is an A_{2A} adenosine receptor agonist that is a coronary vasodilator [see *Clinical Pharmacology (12.1)*]. Regadenoson is chemically described as adenosine, 2-[4-[(methylamino)carbonyl]-1H-pyrazol-1-yl]. Its structural formula is:



The molecular formula for regadenoson is C₁₅H₁₈N₈O₅ and its molecular weight is 390.35. Regadenoson injection is a sterile, nonpyrogenic solution for intravenous injection. The solution is clear and colorless. Each 1 mL in the 5 mL pre-filled syringe contains 0.08 mg regadenoson anhydrous, 8.7 mg dibasic sodium phosphate anhydrous, 5.4 mg monobasic sodium phosphate monohydrate, 150 mg propylene glycol, 1 mg edetate disodium dihydrate, and Water for Injection, with pH between 6.3 and 7.7.

12 CLINICAL PHARMACOLOGY

12.1 Mechanism of Action

Regadenoson is a low affinity agonist ($K_i \approx 1.3 \mu\text{M}$) for the A_{2A} adenosine receptor, with at least 10-fold lower affinity for the A₁ adenosine receptor ($K_i > 16.5 \mu\text{M}$), and weak, if any, affinity for the A_{2B} and A₃ adenosine receptors. Activation of the A_{2A} adenosine receptor by regadenoson produces coronary vasodilation and increases coronary blood flow (CBF).

12.2 Pharmacodynamics

Coronary Blood Flow

Regadenoson injection causes a rapid increase in CBF which is sustained for a short duration. In patients undergoing coronary catheterization, pulsed-wave Doppler ultrasonography was used to measure the average peak velocity (APV) of coronary blood flow before and up to 30 minutes after administration of regadenoson (0.4 mg, intravenously). Mean APV increased to greater than twice baseline by 30 seconds and decreased to less than twice the baseline level within 10 minutes [see *Clinical Pharmacology* (12.3)].

Myocardial uptake of the radiopharmaceutical is proportional to CBF. Because regadenoson injection increases blood flow in normal coronary arteries with little or no increase in stenotic arteries, regadenoson injection causes relatively less uptake of the radiopharmaceutical in vascular territories supplied by stenotic arteries. MPI intensity after regadenoson injection administration is therefore greater in areas perfused by normal relative to stenosed arteries.

Effect of duration of injection

A study in dogs compared the effects of intravenous injection of 2.5 mcg/kg

regadenoson (in 10 mL) over 10 seconds and 30 seconds on CBF. The duration of a two-fold increase in CBF was 97 ± 14 seconds (n=6) and 221 ± 20 seconds (n=4), respectively, for the 10 second and 30 second injections. The peak effects (i.e., maximal increase) on CBF after the 10 second and 30 second injections were $217 \pm 15\%$ and $297 \pm 33\%$ above baseline, respectively. The times to peak effect on CBF were 17 ± 2 seconds and 27 ± 6 seconds, respectively.

Effect of Aminophylline

Aminophylline (100 mg, administered by slow intravenous injection over 60 seconds) injected 1 minute after 0.4 mg regadenoson injection in patients undergoing cardiac catheterization, was shown to shorten the duration of the coronary blood flow response to regadenoson injection as measured by pulsed-wave Doppler ultrasonography [see *Overdosage (10)*].

Effect of Caffeine

Ingestion of caffeine decreases the ability to detect reversible ischemic defects. In a placebo-controlled, parallel group clinical study, patients with known or suspected myocardial ischemia received a baseline rest/stress MPI followed by a second stress MPI. Patients received caffeine or placebo 90 minutes before the second regadenoson injection stress MPI. Following caffeine administration (200 or 400 mg), the mean number of reversible defects identified was reduced by approximately 60%. This decrease was statistically significant [see *Drug Interactions (7.1)* and *Patient Counseling Information (17)*].

Hemodynamic Effects

In clinical studies, the majority of patients had an increase in heart rate and a decrease in blood pressure within 45 minutes after administration of regadenoson injection. Maximum hemodynamic changes after regadenoson injection and adenosine injection in Studies 1 and 2 are summarized in Table 5.

Table 5 Hemodynamic Effects in Studies 1 and 2

Vital Sign Parameter	Regadenoson Injection N = 1,337	Adenosine Injection N = 678
Heart Rate		
> 100 bpm	22%	13%
Increase > 40 bpm	5%	3%
Systolic Blood Pressure		
< 90 mm Hg	2%	3%
Decrease > 35 mm Hg	7%	8%
≥ 200 mm Hg	1.9%	1.9%
Increase ≥ 50 mm Hg	0.7%	0.8%
≥ 180 mm Hg and increase of ≥ 20 mm Hg from baseline	4.6%	3.2%
Diastolic Blood Pressure		
< 50 mm Hg	2%	4%
Decrease > 25 mm Hg	4%	5%
≥ 115 mm Hg	0.9%	0.9%

Increase \geq 30 mm Hg	0.5%	1.1%
--------------------------	------	------

Hemodynamic Effects Following Inadequate Exercise

In a clinical study, regadenoson injection was administered for MPI following inadequate exercise stress. More patients with regadenoson injection administration three minutes following inadequate exercise stress had an increase in heart rate and a decrease in systolic blood pressure compared with regadenoson injection administered at rest. The changes were not associated with any clinically significant adverse reactions. Maximum hemodynamic changes are presented in Table 6.

Table 6 Hemodynamic Effects in Inadequate Exercise Stress Study

Vital Sign Parameter	Group 1 / MPI 1 Regadenoson Injection 3 minutes following exercise (N = 575)	Group 2 / MPI 1 Regadenoson Injection 1 hour following exercise (N = 567)
Heart Rate		
> 100 bpm	44%	31%
Increase > 40 bpm	5%	16%
Systolic Blood Pressure		
< 90 mm Hg	2%	4%
Decrease > 35 mm Hg	29%	10%
\geq 200 mm Hg	0.9%	0.4%
Increase \geq 50 mm Hg	2%	0.4%
\geq 180 mm Hg and increase of \geq 20 mm Hg from baseline	5%	2%
Diastolic Blood Pressure		
< 50 mm Hg	3%	3%
Decrease > 25 mm Hg	6%	5%
\geq 115 mm Hg	0.7%	0.4%
Increase \geq 30 mm Hg	2%	1%

Respiratory Effects

The A_{2B} and A₃ adenosine receptors have been implicated in the pathophysiology of bronchoconstriction in susceptible individuals (i.e., asthmatics). In *in vitro* studies, regadenoson has not been shown to have appreciable binding affinity for the A_{2B} and A₃ adenosine receptors.

In a randomized, placebo-controlled clinical trial of 999 patients with a diagnosis, or risk factors for, coronary artery disease and concurrent asthma or COPD, the incidence of respiratory adverse reactions (dyspnea, wheezing) was greater with regadenoson injection compared to placebo. Moderate (2.5%) or severe (< 1%) respiratory reactions were observed more frequently in the regadenoson injection group compared to

placebo [see *Adverse Reactions (6.1)*].

12.3 Pharmacokinetics

In healthy subjects, the regadenoson plasma concentration-time profile is multi-exponential in nature and best characterized by 3-compartment model. The maximal plasma concentration of regadenoson is achieved within 1 to 4 minutes after injection of regadenoson injection and parallels the onset of the pharmacodynamic response. The half-life of this initial phase is approximately 2 to 4 minutes. An intermediate phase follows, with a half-life on average of 30 minutes coinciding with loss of the pharmacodynamic effect. The terminal phase consists of a decline in plasma concentration with a half-life of approximately 2 hours [see *Clinical Pharmacology (12.2)*]. Within the dose range of 0.3–20 mcg/kg in healthy subjects, clearance, terminal half-life or volume of distribution do not appear dependent upon the dose.

A population pharmacokinetic analysis including data from subjects and patients demonstrated that regadenoson clearance decreases in parallel with a reduction in creatinine clearance and clearance increases with increased body weight. Age, gender, and race have minimal effects on the pharmacokinetics of regadenoson.

Specific Populations

Renally Impaired Patients: The disposition of regadenoson was studied in 18 patients with various degrees of renal function and in 6 healthy subjects. With increasing renal impairment, from mild (CLcr 50 to < 80 mL/min) to moderate (CLcr 30 to < 50 mL/min) to severe renal impairment (CLcr < 30 mL/min), the fraction of regadenoson excreted unchanged in urine and the renal clearance decreased, resulting in increased elimination half-lives and AUC values compared to healthy subjects (CLcr ≥ 80 mL/min). However, the maximum observed plasma concentrations as well as volumes of distribution estimates were similar across the groups. The plasma concentration-time profiles were not significantly altered in the early stages after dosing when most pharmacologic effects are observed. No dose adjustment is needed in patients with renal impairment.

Patients with End Stage Renal Disease: The pharmacokinetics of regadenoson in patients on dialysis has not been assessed; however, in an *in vitro* study regadenoson was found to be dialyzable.

Hepatically Impaired Patients: The influence of hepatic impairment on the pharmacokinetics of regadenoson has not been evaluated. Because greater than 55% of the dose is excreted in the urine as unchanged drug and factors that decrease clearance do not affect the plasma concentration in the early stages after dosing when clinically meaningful pharmacologic effects are observed, no dose adjustment is needed in patients with hepatic impairment.

Geriatric Patients: Based on a population pharmacokinetic analysis, age has a minor influence on the pharmacokinetics of regadenoson. No dose adjustment is needed in elderly patients.

Metabolism

The metabolism of regadenoson is unknown in humans. Incubation with rat, dog, and human liver microsomes as well as human hepatocytes produced no detectable metabolites of regadenoson.

Excretion

In healthy volunteers, 57% of the regadenoson dose is excreted unchanged in the urine (range 19–77%), with an average plasma renal clearance around 450 mL/min, i.e., in excess of the glomerular filtration rate. This indicates that renal tubular secretion plays a role in regadenoson elimination.

13 NONCLINICAL TOXICOLOGY

13.1 Carcinogenesis, Mutagenesis, Impairment of Fertility

Regadenoson was negative in the Ames bacterial mutation assay, chromosomal aberration assay in Chinese hamster ovary (CHO) cells, and mouse bone marrow micronucleus assay.

Long-term animal studies have not been conducted to evaluate regadenoson injection's carcinogenic potential or potential effects on fertility.

13.2 Animal Toxicology and/or Pharmacology

Cardiomyopathy

Minimal cardiomyopathy (myocyte necrosis and inflammation) was observed in rats following single-dose administration of regadenoson. Increased incidence of minimal cardiomyopathy was observed on day 2 in males at doses of 0.08, 0.2 and 0.8 mg/kg (1/5, 2/5, and 5/5) and in females (2/5) at 0.8 mg/kg. In a separate study in male rats, the mean arterial pressure was decreased by 30 to 50% of baseline values for up to 90 minutes at regadenoson doses of 0.2 and 0.8 mg/kg, respectively. No cardiomyopathy was noted in rats sacrificed 15 days following single administration of regadenoson. The mechanism of the cardiomyopathy induced by regadenoson was not elucidated in this study but was associated with the hypotensive effects of regadenoson. Profound hypotension induced by vasoactive drugs is known to cause cardiomyopathy in rats.

Local Irritation

Intravenous administration of regadenoson injection to rabbits resulted in perivascular hemorrhage, vein vasculitis, inflammation, thrombosis and necrosis, with inflammation and thrombosis persisting through day 8 (last observation day). Perivascular administration of regadenoson injection to rabbits resulted in hemorrhage, inflammation, pustule formation and epidermal hyperplasia, which persisted through day 8 except for the hemorrhage which resolved. Subcutaneous administration of regadenoson injection to rabbits resulted in hemorrhage, acute inflammation, and necrosis; on day 8 muscle fiber regeneration was observed.

14 CLINICAL STUDIES

Agreement between regadenoson injection and adenosine injection

The efficacy and safety of regadenoson injection were determined relative to adenosine injection in two randomized, double-blind studies (Studies 1 and 2) in 2,015 patients with known or suspected coronary artery disease who were indicated for pharmacologic stress MPI. A total of 1,871 of these patients had images considered valid for the primary efficacy evaluation, including 1,294 (69%) men and 577 (31%) women with a median age of 66 years (range 26–93 years of age). Each patient received an initial

stress scan using adenosine injection (6-minute infusion using a dose of 0.14 mg/kg/min, without exercise) with a radionuclide gated SPECT imaging protocol. After the initial scan, patients were randomized to either regadenoson injection or adenosine injection, and received a second stress scan with the same radionuclide imaging protocol as that used for the initial scan. The median time between scans was 7 days (range of 1–104 days).

The most common cardiovascular histories included hypertension (81%), CABG, PTCA or stenting (51%), angina (63%), and history of myocardial infarction (41%) or arrhythmia (33%); other medical history included diabetes (32%) and COPD (5%). Patients with a recent history of serious uncontrolled ventricular arrhythmia, myocardial infarction, or unstable angina, a history of greater than first-degree AV block, or with symptomatic bradycardia, sick sinus syndrome, or a heart transplant were excluded. A number of patients took cardioactive medications on the day of the scan, including β -blockers (18%), calcium channel blockers (9%), and nitrates (6%). In the pooled study population, 68% of patients had 0–1 segments showing reversible defects on the initial scan, 24% had 2–4 segments, and 9% had ≥ 5 segments.

Comparison of the images obtained with regadenoson injection to those obtained with adenosine injection was performed as follows. Using the 17-segment model, the number of segments showing a reversible perfusion defect was calculated for the initial adenosine injection study and for the randomized study obtained using regadenoson injection or adenosine injection. The agreement rate for the image obtained with regadenoson injection or adenosine injection relative to the initial adenosine injection image was calculated by determining how frequently the patients assigned to each initial adenosine injection category (0–1, 2–4, 5–17 reversible segments) were placed in the same category with the randomized scan. The agreement rates for regadenoson injection and adenosine injection were calculated as the average of the agreement rates across the three categories determined by the initial scan. Studies 1 and 2 each demonstrated that regadenoson injection is similar to adenosine injection in assessing the extent of reversible perfusion abnormalities (Table 7).

Table 7 Agreement Rates in Studies 1 and 2

	Study 1	Study 2
Adenosine Injection – Adenosine Injection Agreement Rate (\pm SE)	61 \pm 3%	64 \pm 4%
Adenosine Injection – Regadenoson Injection Agreement Rate (\pm SE)	62 \pm 2%	63 \pm 3%
Rate Difference (Regadenoson Injection – Adenosine Injection) (\pm SE) 95% Confidence Interval	1 \pm 4% -7.5, 9.2%	-1 \pm 5% -11.2, 8.7%

Use of Regadenoson Injection in Patients with Inadequate Exercise Stress

The efficacy and safety of regadenoson injection administered 3 minutes (Group 1) or 1 hour (Group 2) following inadequate exercise stress were evaluated in an open-label randomized, multi-center, non-inferiority study. Adequate exercise was defined as $\geq 85\%$ maximum predicted heart rate and ≥ 5 METS. SPECT MPI was performed 60–90 minutes after regadenoson injection administration in each group (MPI 1). Patients returned 1–14 days later to undergo a second stress MPI with regadenoson injection

without exercise (MPI 2).

All patients were referred for evaluation of coronary artery disease. Of the 1,147 patients randomized, a total of 1,073 patients received regadenoson injection and had interpretable SPECT scans at all visits; 538 in Group 1 and 535 in Group 2. The median age of the patients was 62 years (range 28 to 90 years) and included 633 (59%) men and 440 (41%) women.

Images from MPI 1 and MPI 2 for the two groups were compared for presence or absence of perfusion defects. The level of agreement between the MPI 1 and the MPI 2 reads in Group 1 was similar to the level of agreement between MPI 1 and MPI 2 reads in Group 2. However, two patients receiving regadenoson injection 3 minutes following inadequate exercise experienced a serious cardiac adverse reaction. No serious cardiac adverse reactions occurred in patients receiving regadenoson injection 1 hour following inadequate exercise stress [see *Adverse Reactions (6.1)*, *Clinical Pharmacology (12.2)*].

16 HOW SUPPLIED/STORAGE AND HANDLING

Regadenoson Injection is supplied as a sterile, preservative-free, clear and colorless solution containing 0.08 mg/mL regadenoson in the following package:

Unit of Sale	Concentration	Each
NDC 0409-1401-01 Bundle containing 10 Ansyr [®] syringes	0.4 mg/5 mL (0.08 mg/mL)	NDC 0409-1401-05 5 mL single-dose pre-filled plastic Ansyr [®] syringe with luer-lock fitting

Discard unused portion.

Store at 20°C to 25°C (68°F to 77°F); excursions permitted between 15°C and 30°C (59°F and 86°F). [See USP Controlled Room Temperature]

17 PATIENT COUNSELING INFORMATION

Drug Interaction

Patients should be instructed to avoid consumption of any products containing methylxanthines, including caffeinated coffee, tea or other caffeinated beverages, caffeine-containing drug products, aminophylline and theophylline for at least 12 hours before a scheduled radionuclide MPI [see *Warnings and Precautions (5.8)* and *Clinical Pharmacology (12.2)*].

Cardiovascular

Advise patients that they may be at increased risk of fatal and nonfatal heart attacks, abnormal heart rhythms, cardiac arrest, significant increase or decrease in blood pressure, or cerebrovascular accidents (stroke) with the use of regadenoson injection [see *Warnings and Precautions (5.1)*, *(5.3)*, *(5.5)*, *(5.6)* and *(5.9)*].

Hypersensitivity

Inform patients that allergic reactions have been reported with regadenoson injection.

Advise patients how to recognize such a reaction and when to seek medical attention [see *Warnings and Precautions (5.4)*].

Respiratory

Advise patients with COPD or asthma about the need for administration of pre- and post-study bronchodilator therapy and to call their clinician if they experience any shortness of breath or difficulty breathing following an MPI study with regadenoson injection [see *Warnings and Precautions (5.7)*].

Seizures

Advise patients that they may be at increased risk of seizures. Question patients about a history of seizures [see *Warnings and Precautions (5.8)*].

Lactation

Advise a woman to pump and discard breast milk for 10 hours after regadenoson injection administration [see *Use in Specific Populations (8.2)*].

Distributed by Hospira, Inc., Lake Forest, IL 60045 USA

LAB-1420-1.0

PRINCIPAL DISPLAY PANEL - 0.4 mg/5 mL Syringe Label

For Pharmacologic Stress Only

5 mL

5 mL Single Dose

NDC 0409-1401-05

Rx only

Regadenoson Injection

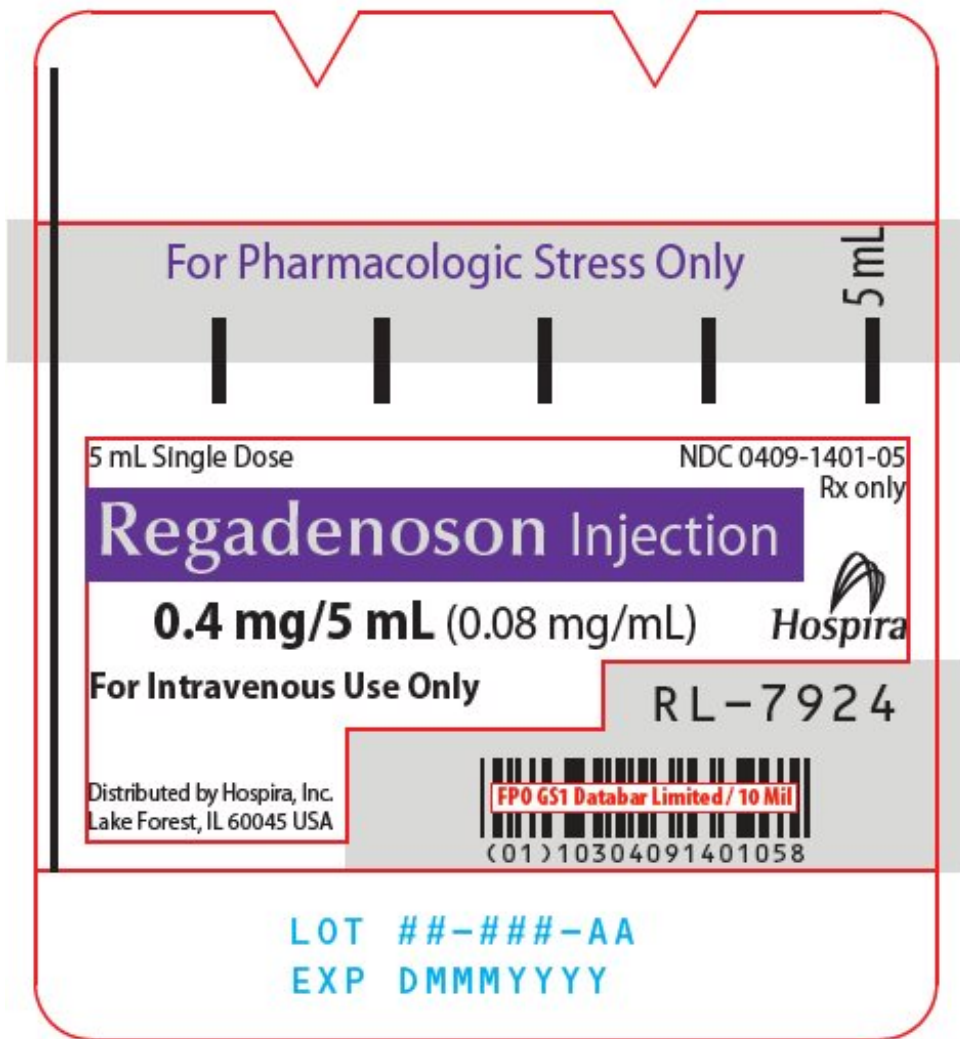
0.4 mg/5 mL (0.08 mg/mL)

Hospira

For Intravenous Use Only

RL-7924

Distributed by Hospira, Inc.
Lake Forest, IL 60045 USA



PRINCIPAL DISPLAY PANEL - 0.4 mg/5 mL Syringe Carton

◀ PRESS AND PULL TO OPEN ▶

5 mL
NDC 0409-1401-05
Rx only

Regadenoson
Injection

0.4 mg/5 mL
(0.08 mg/mL)

For Intravenous Use Only

Inject 5 mL intravenously
within 10 seconds.
Follow immediately with saline flush
and radiopharmaceutical.

Ansyr[®]
Single Dose Prefilled Syringe
Pharmacologic Stress Agent

For Diagnostic Purpose Only

Hospira

LOT #####AA

EXP DMMYYYY

◀ PRESS AND PULL TO OPEN ▶

Use Aseptic Technique

1. Remove luer cover.
2. Hold plunger and push barrel forward to relieve any resistance that may be present.
3. Pull the barrel down until air is expelled from the syringe.

5 mL NDC 0409-1401-05 Rx only

Regadenoson Injection

0.4 mg/5 mL (0.08 mg/mL)

For Intravenous Use Only

Inject 5 mL Intravenously within 10 seconds.

Follow immediately with saline flush and radiopharmaceutical.

Ansyr[®]

Single Dose Prefilled Syringe
Pharmacologic Stress Agent
For Diagnostic Purpose Only

LOT #####AA
EXP DMMYYYY

5 mL NDC 0409-1401-05

Regadenoson Injection

0.4 mg/5 mL (0.08 mg/mL)

5 mL NDC 0409-1401-05

Regadenoson Injection

0.4 mg/5 mL (0.08 mg/mL)

CA-7539

Distributed by Hospira, Inc. Lake Forest, IL 60045 USA

Each mL contains: 0.08 mg regadenoson anhydrous; 8.7 mg dibasic sodium phosphate, anhydrous; 5.4 mg monobasic sodium phosphate, monohydrate; 15.0 mg propylene glycol; 1 mg edetate disodium, dihydrate and Water for Injection, q.s. Preservative free. Medication and fluid path are sterile and nonpyrogenic if cap is in place and package is intact.

Syringe may require needle or blunt. Discard unused portion.
Recommended Dosage: See Prescribing Information.
Store at 20°C to 25°C (68°F to 77°F); excursions permitted between 15°C and 30°C (59°F and 86°F). [See USP Controlled Room Temperature.]

Product Information

Product Type	HUMAN PRESCRIPTION DRUG	Item Code (Source)	NDC:0409-1401
Route of Administration	INTRAVENOUS		

Active Ingredient/Active Moiety

Ingredient Name	Basis of Strength	Strength
REGADENOSON ANHYDROUS (UNII: 7AXV542LZ4) (REGADENOSON ANHYDROUS - UNII: 7AXV542LZ4)	REGADENOSON ANHYDROUS	0.08 mg in 1 mL

Inactive Ingredients

Ingredient Name	Strength
SODIUM PHOSPHATE, DIBASIC, ANHYDROUS (UNII: 22ADO53M6F)	8.7 mg in 1 mL
SODIUM PHOSPHATE, MONOBASIC, MONOHYDRATE (UNII: 593YOG76RN)	5.4 mg in 1 mL
PROPYLENE GLYCOL (UNII: 6DC9Q167V3)	150 mg in 1 mL
EDETATE DISODIUM (UNII: 7FLD91C86K)	1 mg in 1 mL
WATER (UNII: 059QF0KO0R)	

Packaging

#	Item Code	Package Description	Marketing Start Date	Marketing End Date
1	NDC:0409-1401-01	10 in 1 PACKAGE	03/01/2023	
1		1 in 1 CARTON		
1	NDC:0409-1401-05	5 mL in 1 SYRINGE, PLASTIC; Type 2: Prefilled Drug Delivery Device/System (syringe, patch, etc.)		

Marketing Information

Marketing Category	Application Number or Monograph Citation	Marketing Start Date	Marketing End Date
ANDA	ANDA214349	03/01/2023	

Labeler - Hospira, Inc. (141588017)

Establishment

Name	Address	ID/FEI	Business Operations
Hospira, Inc.		093132819	ANALYSIS(0409-1401) , LABEL(0409-1401) , MANUFACTURE(0409-1401) , PACK(0409-1401)