

Single use only

This convenience kit is for intramuscular and subcutaneous use only

Not for intravenous or ophthalmic use.

This Epinephrine Convenience Kit containing epinephrine 1 mg/ mL and supplies to administer epinephrine is for patients weighing equal to or greater than 15 kg (33 lbs)

For use by licensed health care professionals authorized to administer prescription medication.

Store between 20-25°C (68 to 77°F) [See USP Controlled Room Temperature].

Epinephrine is light sensitive. Protect from light and freezing.

Do not store epinephrine outside of this protective carton.

Indication and Use

Anaphylaxis: Emergency treatment of allergic reactions (Type I), including anaphylaxis, which may result from insect stings or bites, foods, drugs, sera, diagnostic testing substances and other allergens, as well as idiopathic anaphylaxis or exercise-induced anaphylaxis.

This kit is indicated for use in patients weighing equal to or greater than 15 kg (33 lbs).

Dosage and Administration

Always follow the epinephrine manufacturers information and your prescriber's order for dosing epinephrine in allergic reactions (Type 1) and anaphylaxis.

Anaphylaxis:

Adults and Children 30 kg (66 lbs) or more: 0.3 to 0.5 mg (0.3 to 0.5 mL) of undiluted epinephrine 1mg/ mL (1:1000) administered intramuscularly or subcutaneously in the anterolateral aspect of the thigh, up to a maximum of 0.5 mg (0.5 mL) per injection, repeated every 5 to 10 minutes as necessary. Monitor clinically for reaction severity and cardiac effects.

Children 15-30 kg (33-66 lbs): 0.01 mg/kg (0.01 mL/kg) of undiluted epinephrine 1 mg/ mL (1:1000) administered intramuscularly or subcutaneously in the anterolateral aspect of the thigh, up to a maximum of 0.3 mg (0.3 mL) per injection, repeated every 5 to 10 minutes as necessary. Monitor clinically for reaction severity and cardiac effects.

General Considerations

Inspect visually for particulate matter and discoloration prior to administration; solution should be clear and colorless. Do not use if the solution is colored or cloudy, or if it contains particulate matter.

Inject epinephrine 1 mg/ mL (1:1000) intramuscularly or subcutaneously into the anterolateral aspect of the thigh, through clothing if necessary. When administering to a child, to minimize the risk of injection related injury, hold the leg firmly in place and limit movement prior to and during an injection.

The injection may be repeated every 5 to 10 minutes as necessary. For intramuscular administration, ensure the injection is administered into the muscle.

Monitor the patient clinically for the severity of the allergic

reaction and potential cardiac effects of the epinephrine and repeat as needed.

Do not administer repeated injections at the same site, as the resulting vasoconstriction may cause tissue necrosis.

The Epinephrine Syringe™ only has markings of 0.15 mL, 0.3 mL and 0.5 mL for corresponding doses of epinephrine 1 mg/ mL (1:1000) of 0.15 mg, 0.3 mg and 0.5 mg.



The Epinephrine Syringe™ does not have markings for doses less than 0.15 mL (0.15 mg).

Only use the Epinephrine Syringes with the epinephrine included in this kit.

Prior to use confirm this kit will meet your prescriber's protocol or order regarding the treatment of allergic reactions (Type 1) or anaphylaxis.

See enclosed product information sheet for full prescribing information including, contraindications, warning, precautions, adverse reactions, drug interactions, use in specific populations, overdose, full product description and clinical pharmacology.

This is a single use kit. Discard all unused contents within 30 minutes of entering epinephrine vial.

Discard kit and any unused epinephrine in the appropriate sharps/ medical waste containers according to the rules and laws in your area.

Each EpinephrineSnap™-V kit contains

- (1) Vial of epinephrine injection 1:1000 1 mg/ mL for intramuscular or subcutaneous use
- (4) Alcohol Prep Pads
- (3) 23-gauge 1-inch safety needles
- (3) 1 mL Luer lock Epinephrine Syringes™ with markings of 0.15 mL, 0.3 mL and 0.5 mL
- (1) Epinephrine Product Information Sheet
- (1) Instructions For Use card

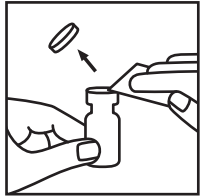
Instructions for Use

Remove inner tray from outer carton, place on a flat surface. Remove the epinephrine vial. Inspect the epinephrine vial for particulate matter and discoloration prior to administration. Do not use if the solution is colored or cloudy or contains particulate matter.

Snap off the lid of the epinephrine vial and wipe the rubber stopper with an alcohol prep pad.

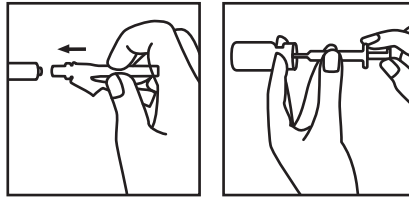
Do not use if the solution is colored or cloudy or contains particulate matter.

Snap off the lid of the epinephrine vial and wipe the rubber stopper with an alcohol prep pad.



Remove the safety needles and The Epinephrine Syringe™.

Attach a safety needle to a syringe and twist in place. Withdraw air into syringe equal to the desired dose. Insert needle through the rubber stopper of the epinephrine vial, injecting the air, and then withdrawing a single dose.



Prepare to administer the subcutaneous or intramuscular injection. The preferred site of epinephrine administration is the anterolateral aspect of the thigh because of its location, size, and available blood flow. When injecting, lift the vastus lateralis muscle away from the bone.

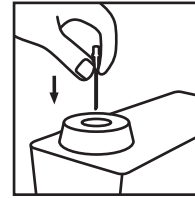
Cleanse the site of administration with an alcohol pad prior to injection, however, epinephrine may be injected through clothing if necessary.

Do not inject into the buttocks, digits, hands, or feet.

If the patient's symptoms of anaphylaxis persist, epinephrine dosing may be repeated every 5 to 10 minutes.

Do not administer repeat injections at the same site as the resulting vasoconstriction will cause tissue necrosis.

Any unused epinephrine either in the vial or syringe must be discarded within 30 minutes after entering the epinephrine vial.



See the enclosed epinephrine full prescribing information.

You are encouraged to report negative side effects of prescription drugs to the FDA. Visit fda.gov/safety/medwatch/ or call 1-800-FDA-1088.

To learn more about our products, go to <https://snapmedicalindustries.com>

**Snap Medical Industries, LLC
545 Metro Place South, Suite 100
Dublin, OH 43017
Phone: (800) 875-4508**

EpinephrineSnap®-V IFU | 8/2022